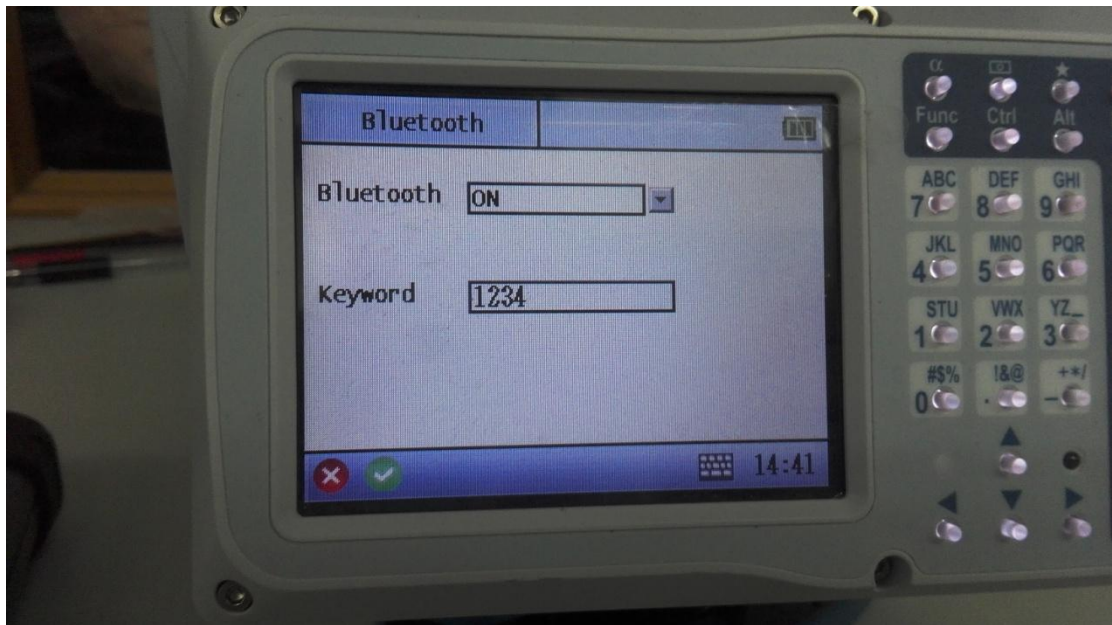
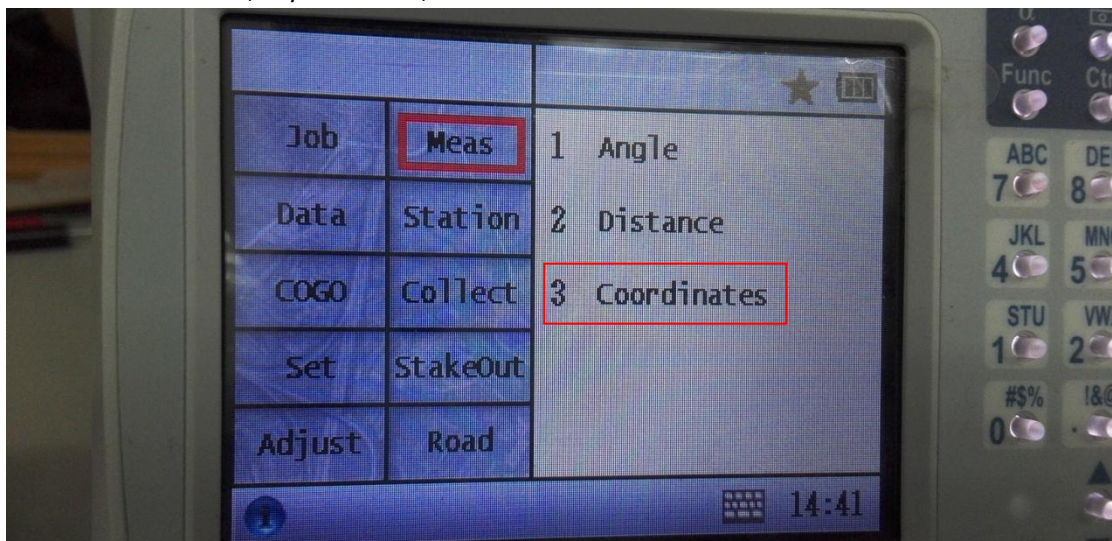


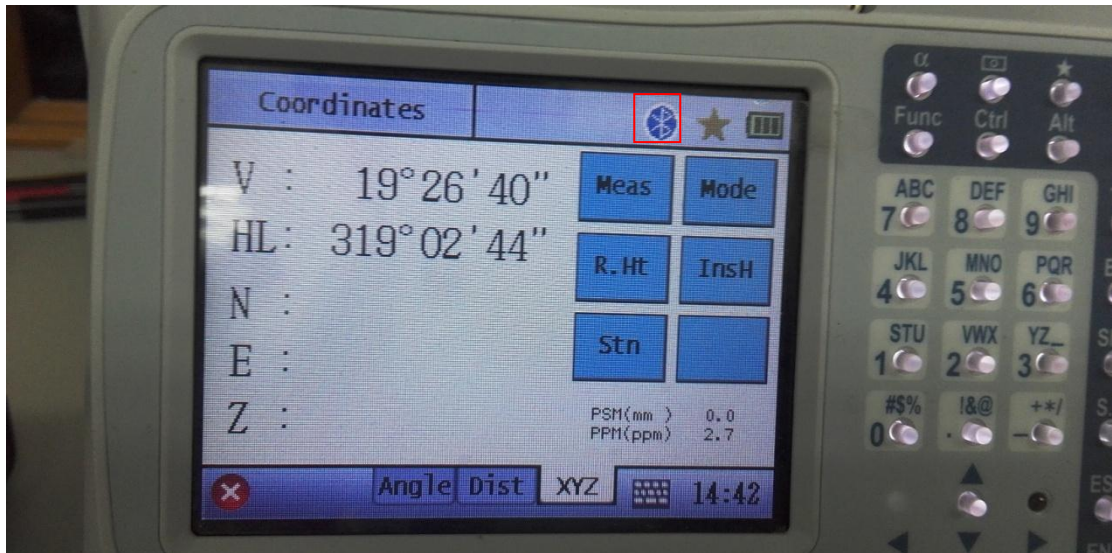
1. Choose Set, then Bluetooth



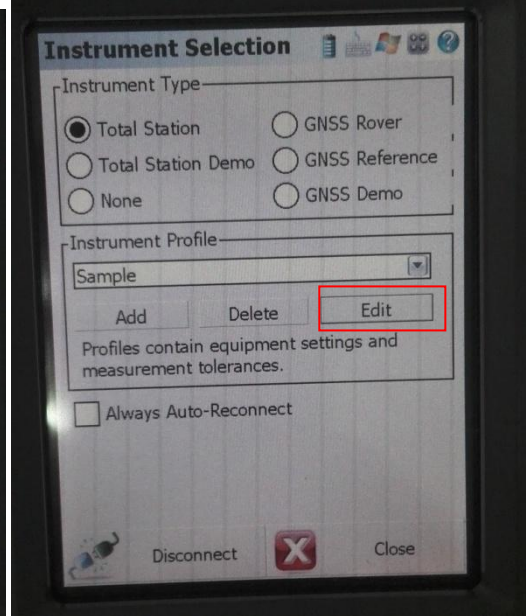
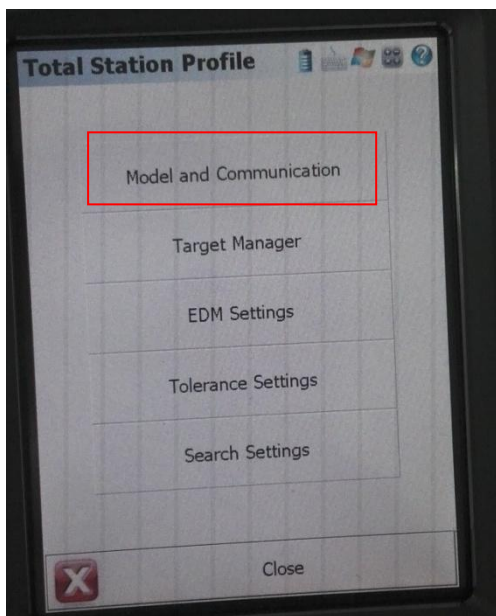
2. Set Bluetooth ON, keyword 1234, click ✓



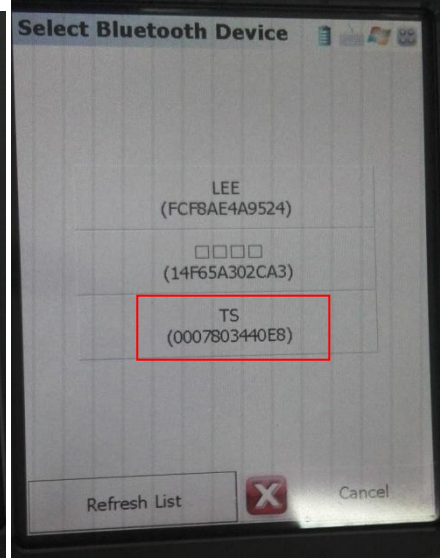
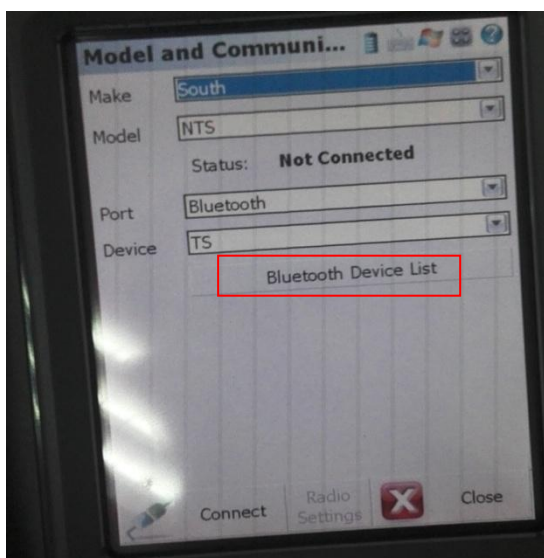
3. Choose Meas, then 3 Coordinates



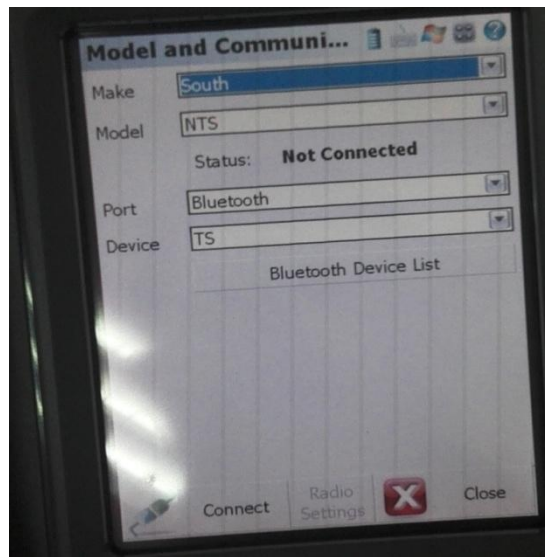
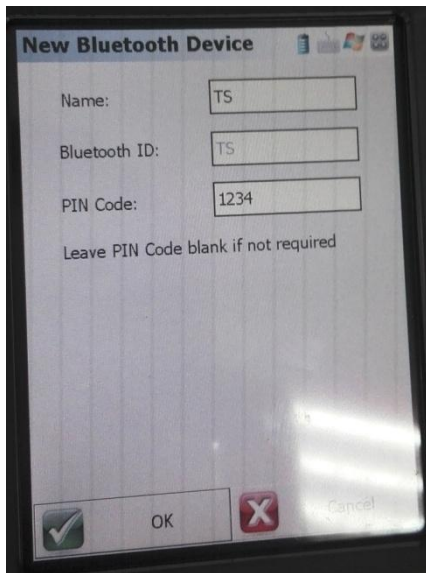
4. In measurement screen when you see bluetooth Symbol, it means Bluetooth is turned on.



5. On Field Genius, select Total Station and Edit.



6. Choose South/ NTS/ Bluetooth, then click Bluetooth Device list, choose TS



7. Input PIN code 1234 then choose OK, click Connect.